

Application

Note
60

Extraction of Paraquat and Diquat from Water, Using ENVI™-8 DSK Solid Phase Extraction Disks

ENVI-Disk solid phase extraction disks are a porous glass fiber matrix containing C8- or C18-modified silica. In extractions of organic contaminants from 1 liter or more of water, these rigid disks provide faster flow rates and exhibit less clogging than Teflon® disks, and are less expensive. They can be used to extract polynuclear (polycyclic) aromatic hydrocarbons (PAHs), polychlorinated biphenyls (PCBs), pesticides, herbicides, and phthalates from water. This application note describes a process for extracting paraquat and diquat from water according to US Environmental Protection Agency Method 549.1.

Key Words:

- paraquat ● diquat ● pesticides ● water analyses
- SPE disks ● sample preparation

NOTE: This method is based on the sample extraction procedure in Section 11.3 of US Environmental Protection Agency Method 549.1. It is not intended to be a replacement or substitute for the EPA procedure. For detailed information about preparing samples for analysis according to Method 549.1, please refer to the EPA method. (Request from National Technical Information Service, U.S. Department of Commerce, Springfield, VA 22161 USA [Tel. 703-487-4650])

Solution Preparation

Conditioning Solution A: Dissolve 0.500g cetyl trimethyl ammonium bromide and 5mL concentrated ammonium hydroxide in 500mL deionized water. Dilute to 1000mL in a volumetric flask.

Conditioning Solution B: Dissolve 10.0g 1-hexanesulfonic acid (sodium salt) and 10mL concentrated ammonium hydroxide in 250mL deionized water. Dilute to 500mL in a volumetric flask.

10% (w/v) Sodium Hydroxide: Dissolve 50g sodium hydroxide in 400mL deionized water. Dilute to 500mL in a volumetric flask.

10% (v/v) Hydrochloric Acid: Add 50mL concentrated hydrochloric acid to 400mL deionized water. Dilute to 500mL in a volumetric flask.

Disk Eluting Solution: Add 13.5mL orthophosphoric acid and 10.3mL diethylamine to 500mL deionized water. Dilute to 1000mL in a volumetric flask.

Ion Pair Concentrate: Dissolve 3.75g 1-hexanesulfonic acid in 15mL disk eluting solution. Dilute to 25mL with disk eluting solution in a volumetric flask.

Sample Preparation

1. Allow a 250mL sample of water to equilibrate to room temperature in a silanized amber glass bottle or an amber polyvinylchloride bottle.

2. Adjust sample pH to 10.5 ± 0.2 with 10% (w/v) sodium hydroxide or 10% (v/v) hydrochloric acid.
3. Extract sample immediately after adjusting pH.
4. For QC/QA samples, add 25µg of each analyte.

Apparatus Assembly

1. Assemble the 47mm glassware (flask, vacuum line, and filtration support) according to the instructions that accompanied the ENVI-Disk™ SPE disks. Silanization of the apparatus might improve analyte recovery.
2. Place a 47mm ENVI-8 DSK disk (Cat. No. 57172) on the support, **wrinkled side up**.
3. Center the disk, so that it evenly overlaps all sides of the support.
4. Carefully place the reservoir on the disk and attach the clamp securely.

Disk Conditioning

Pour or pipette the following solvents onto the disk in the sequence indicated.

Apply low vacuum (1–2" Hg/3–7kPa) immediately after adding the first solvent (methanol), and maintain the vacuum throughout the conditioning sequence.

When the level of one solvent is just above the top surface of the disk add the next solvent.

Do not allow any air to pass through the disk or to reach the top surface of the disk.

Solvents:

1. 10mL methanol
2. 2 x 10mL deionized water
3. 10mL conditioning solution A
4. 2 x 10mL deionized water
5. 10mL conditioning solution B

Sample Addition

1. Pour the sample into the apparatus, directly onto the film of conditioning solution B left on the disk from the last conditioning step.
2. Increase the vacuum to approximately 10" Hg (35kPa), to provide a flow rate of approximately 100mL/minute. The disk must not go dry until the entire sample has been processed.

Analyte Elution

1. Release the vacuum.
2. Remove the filtration support and reservoir from the vacuum flask without disturbing the disk.
3. Empty the processed water from the flask, insert a silanized glass sample collection tube, and reassemble the apparatus.
4. Add approximately 1 mL methanol to the disk. Be sure to cover the entire surface of the disk.
5. Immediately add 4 mL disk eluting solution and draw the solution through the disk at 1–2" Hg (3–7 kPa) until the solution just covers the top surface of the disk.
6. Add an additional 4 mL of disk eluting solution and draw it completely through the disk.

Analysis

1. Add 100 µL ion pair concentrate to the eluate.
2. Adjust volume as necessary with elution solvent and analyze 100 µL by HPLC/UV.

Figure A. Paraquat and Diquat Extracted from Water, Using an ENVI-8 DSK SPE Disk

Sample: 250 mL drinking water, pH to 10.5 ± 0.2 with 10% (w/v) NaOH or 10% (v/v) HCl

Extraction Disk: **ENVI-8 DSK, 47mm**
Cat. No.: **57172**

Conditioning:
10 mL methanol
2 x 10 mL water
10 mL (0.5 g cetyl trimethyl ammonium bromide/5 mL ammonium hydroxide in 500 mL water, diluted to 1 L)
2 x 10 mL water
10 mL (10.0 g sodium hexanesulfonic acid/10 mL ammonium hydroxide in 250 mL water, diluted to 500 mL)
Do not allow disk to dry between solutions

Sample Addition: 100 mL/min flow rate

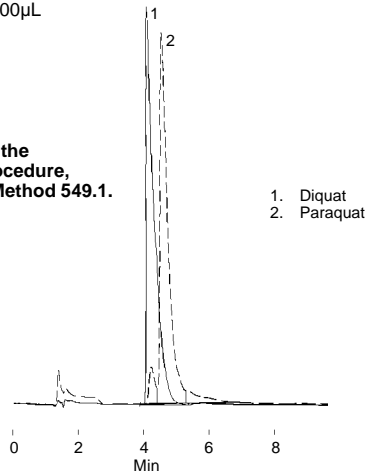
Extraction: 1 mL methanol, then 2 x 4 mL (13.5 mL orthophosphoric acid/10.3 mL diethylamine in 500 mL water, diluted to 1 L)

Column: C18 HPLC, 15 cm x 4.6 mm ID, 5 µm particles

Mobile Phase: 3.5 mL triethylamine/1.0 g sodium 1-hexanesulfonic acid in 800 mL water (pH to 2.5 with orthophosphoric acid), diluted to 1 L

Oven: 35°C
Flow: 2.0 mL/min
Det.: photodiode array, 308 nm (diquat) or 257 nm (paraquat)
Inj.: 100 µL

For details of the extraction procedure, see US EPA Method 549.1.



794-0715

ENVI-Disk



994-0256

ENVI-Disk Holder



995-0117

ENVI-Disk Holder Manifold



994-520

ENVI-Disk Clamp



996-0280

Ordering Information:

Description	Cat. No.
ENVI-8 DSK SPE Disks	
C8 bonded phase	
47mm, pk. of 24	57172
SUPELCOSIL™ LC-18 HPLC Column	
15cm x 4.6mm ID, 5µm particles	58230-U
Accessories	
ENVI-Disk Holder*	57173
Flask, 1-liter, 40/35 fitting	Z290610-1EA
Collection Tube, 25 x 250mm	57175
ENVI-Disk Holder Manifold	57174
47mm Filter Clamp Assembly	57260-U
Replacement Teflon Stage, 47mm	57261
90mm Filter Clamp Assembly	57262
Replacement Teflon Stage, 90mm	57263

* Flask and tube not included with holder.

Reference

1. US Environmental Protection Agency Method 549.1.
Request from National Technical Information Service, U.S. Department of Commerce, Springfield, VA 22161 USA (Tel. 703-487-4650).

Trademarks

ENVI, ENVI-Disk, SUPELCOSIL – Sigma-Aldrich Co.
Teflon – E.I. du Pont de Nemours & Co., Inc.

Note 60

For more information, or current prices, contact your nearest Supelco subsidiary listed below. To obtain further contact information, visit our website (www.sigma-aldrich.com), see the Supelco catalog, or contact Supelco, Bellefonte, PA 16823-0048 USA.

ARGENTINA · Sigma-Aldrich de Argentina, S.A. · Buenos Aires 1119 AUSTRALIA · Sigma-Aldrich Pty. Ltd. · Castle Hill NSW 2154 AUSTRIA · Sigma-Aldrich Handels GmbH · A-1110 Wien
BELGIUM · Sigma-Aldrich N.V./S.A. · B-2880 Bornem BRAZIL · Sigma-Aldrich Quimica Brasil Ltda. · 01239-010 São Paulo, SP CANADA · Sigma-Aldrich Canada, Ltd. · 2149 Winston Park Dr., Oakville, ON L6H 6J8
CZECH REPUBLIC · Sigma-Aldrich s.r.o. · 186 00 Praha 8 DENMARK · Sigma-Aldrich Denmark A/S · DK-2665 Vallensbaek Strand FINLAND · Sigma-Aldrich Finland/YA-Kemia Oy · FIN-00700 Helsinki
FRANCE · Sigma-Aldrich Chimie · 38297 Saint-Quentin-Fallavier Cedex GERMANY · Sigma-Aldrich Chemie GmbH · D-82041 Deisenhofen GREECE · Sigma-Aldrich (o.m.) Ltd. · Ilioupoli 16346, Athens
HUNGARY · Sigma-Aldrich Kft. · H-1067 Budapest INDIA · Sigma-Aldrich Co. · Bangalore 560 048 IRELAND · Sigma-Aldrich Ireland Ltd. · Dublin 24 ISRAEL · Sigma Israel Chemicals Ltd. · Rehovot 76100
ITALY · Sigma-Aldrich s.r.l. · 20151 Milano JAPAN · Sigma-Aldrich Japan K.K. · Chuo-ku, Tokyo 103 KOREA · Sigma-Aldrich Korea · Seoul MALAYSIA · Sigma-Aldrich (M) Sdn. Bhd. · Selangor
MEXICO · Sigma-Aldrich Quimica S.A. de C.V. · 50200 Toluca NETHERLANDS · Sigma-Aldrich Chemie BV · 3330 AA Zwijndrecht NORWAY · Sigma-Aldrich Norway · Torshov · N-0401 Oslo
POLAND · Sigma-Aldrich Sp. z o.o. · 61-663 Poznań PORTUGAL · Sigma-Aldrich Quimica, S.A. · Sintra 2710 RUSSIA · Sigma-Aldrich Russia · Moscow 103062 SINGAPORE · Sigma-Aldrich Pte. Ltd.
SOUTH AFRICA · Sigma-Aldrich (pty) Ltd. · Jet Park 1459 SPAIN · Sigma-Aldrich Quimica, S.A. · 28100 Alcobendas, Madrid SWEDEN · Sigma-Aldrich Sweden AB · 135 70 Stockholm
SWITZERLAND · Supelco · CH-9471 Buchs UNITED KINGDOM · Sigma-Aldrich Company Ltd. · Poole, Dorset BH12 4QH
UNITED STATES · Supelco · Supelco Park · Bellefonte, PA 16823-0048 · Phone 800-247-6628 or 814-359-3441 · Fax 800-447-3044 or 814-359-3044 · email: supelco@sial.com

H

Supelco is a member of the Sigma-Aldrich family. Supelco products are sold through Sigma-Aldrich, Inc. Sigma-Aldrich warrants that its products conform to the information contained in this and other Sigma-Aldrich publications. Purchaser must determine the suitability of the product for a particular use. Additional terms and conditions may apply. Please see the reverse side of the invoice or packing slip.

AGV